



Advancing Research. Improving Lives.™

NRG NCORP Bootcamp

Deborah Bruner, RN, FAAN, NCORP Contact PI
Lisa Kachnic, MD, NCORP Co-PI

NRG 2026 Winter Meeting
January 22, 2026



Workshop Goals

- Apply procedures for developing and enrolling to NCORP trials.
- Identify approaches to engage with patient advocates and build meaningful partnerships with patients and advocacy groups to improve research and health care outcomes.



Advancing Research. Improving Lives.™

Overview of NRG NCORP

Lisa Kachnic, MD, FASTRO, NCORP mPI

**NRG 2026 Winter Meeting
January 22, 2026**





Disclosures

- UpToDate™ - royalties
- Varian Medical Systems – research trial funding
- NRG Board of Directors
- RTOG Foundation Board

NCI National Community Oncology Research Program (NCORP) Network

The NCI **NCORP** is a national network that **brings cancer clinical trials and care delivery studies to people in their own communities**

Their focus areas include:

- Cancer Control and Prevention
- Symptom Management
- Screening
- Post-Treatment Surveillance
- Quality-of-Life Studies Embedded in Treatment Trials
- Cancer Care Delivery
- Cancer Disparities

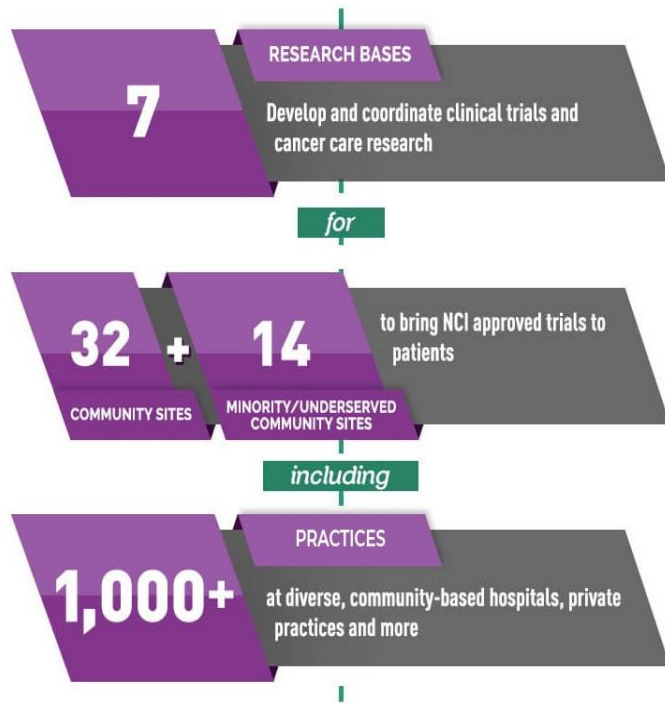


NCTN: National Clinical Trials Network



LEGEND

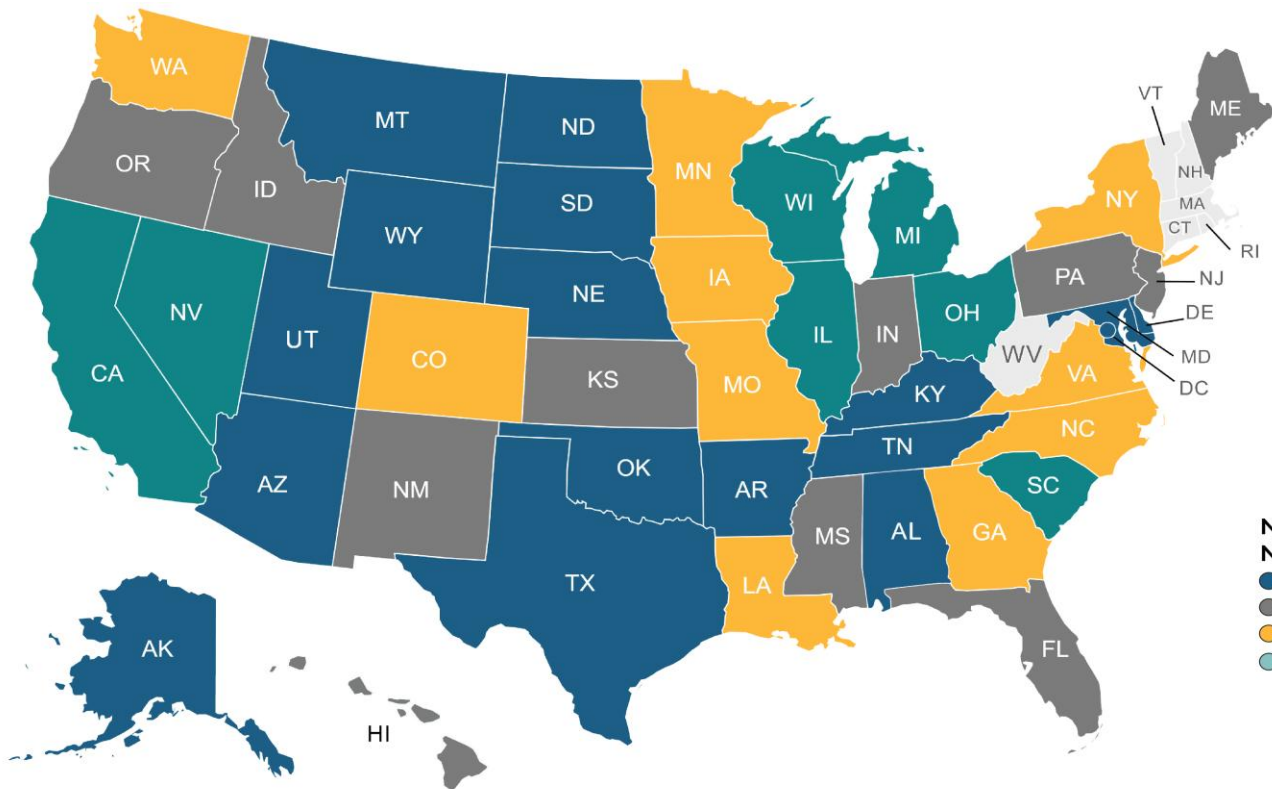
- Centralized Functions:
 - Centralized Institutional Review Board
 - Cancer Trials Support Unit
 - Imaging and Radiation Oncology Core (IROC) Group
 - Common Data Management System
 - Central Hosting
- 32 Lead Academic Participating Sites (LAPS)
- Operations
- S Statistics & Data Management
- T Tissue Banks
- M Member Sites



From 2014-2018

OVER 100 CLINICIANS
& 4,500
PATIENTS

have been enrolled by NCORP
sites to cancer care delivery
research studies



Number of
NCORP Affiliates

- 1-9
- 10-24
- 25-49
- 50+



NCI Community Oncology
Research Program

NCTN and NCORP

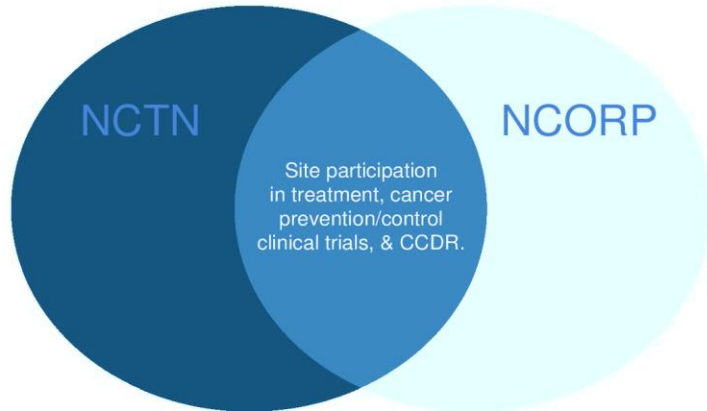
NCTN and NCORP Relationship

NCTN Focus (CTEP):

- Late-phase treatment trials
- Advanced imaging trials

NCORP Focus (DCP):

- Cancer prevention and control trials
- Cancer care delivery research (CCDR)
- Comparative effectiveness research



NCTN (CTEP) Trials

Endpoints include:

- PFS
- OS
- Compare cancer treatments (ph 1, 2, 3)

Goals:

- New treatment
- Biomarker driven treatment
- Targeted therapy
- Radiation
- Chemotherapy
- Immunotherapy

NCORP (DCP) Trials

- Cancer Prevention
- Patient Reported Outcomes
- Cancer Care Delivery Research
- Health Disparities
- Cancer Control/Symptom Management

NRG NCORP Leadership



NCORP PIs

Deborah Bruner, PhD, RN deborah.w.bruner@emory.edu
Lisa Kachnic, MD; lak2187@cumc.columbia.edu



Patient Centered Outcomes Research

Chari: Ben Movsas, MD; bmovsas1@hfhs.org
Vice-Chair Ronald Chen, MD; rchen2@kumc.edu



Cancer Prevention

Chair/NCORP Deputy PI: Julie Bauman, MD; jebauman@gwu.edu
Vice Chair: Stephanie Blank, MD;
Stephanie.Blank@mountsinai.org



Cancer Care Delivery Research

Chair: Mary Cooley, PhD; Mary_Cooley@dfci.harvard.edu
Vice Chair: Sarah Hawley; sarahaw1@umich.edu



Health Disparities

Chair: Jennifer Wenzel, PhD; jwenzel@jhu.edu
Vice Chair: Evan Graboyes, MD, graboyes@muscc.edu



Cancer Control and Symptom Management

Chair: Tracy Crane, PhD; tecrane@med.miami.edu
Vice Chair: Mylin Torres, MD; matorre@emory.edu

NCORP Operations and SDMC



Stephanie Pugh, PhD
Deputy Director, NCORP SDMC



Reena Cecchini, PhD
Biostatistician



Hanna Bandos, PhD
Biostatistician



Danielle Enserro, PhD
BioStatistician



Erica Field, MPH, MHA
NCORP Administrator

Patient Advocates



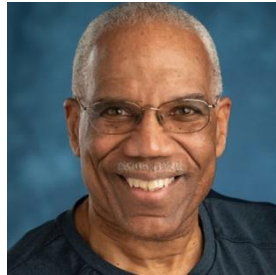
Laurel Pracht
Cancer Prevention and Control



Katie Keyser
Patient Centered Outcomes
Research Committee



Diane Rose
Cancer Prevention and Control



Mark Harris
Health Care Access Committee

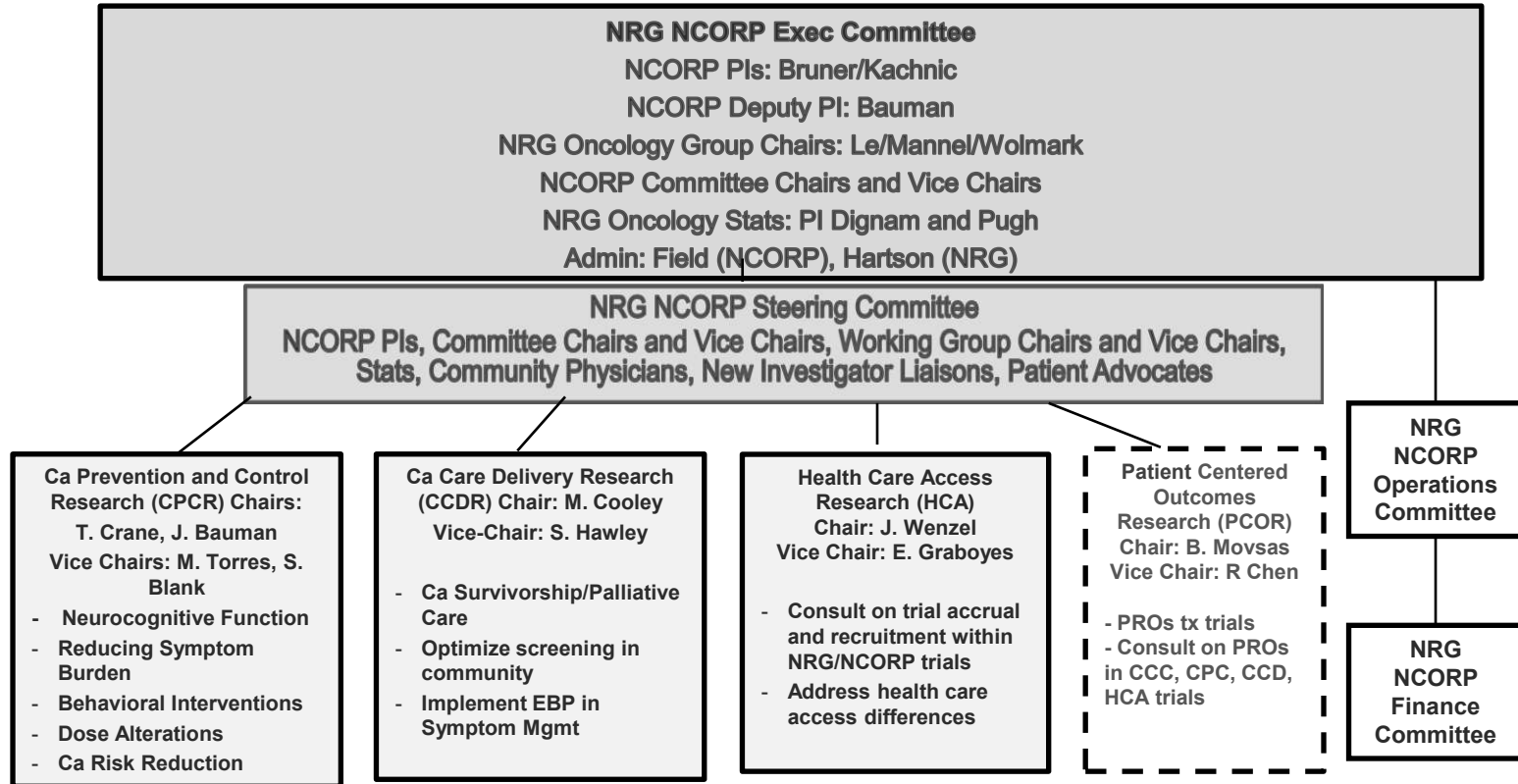


Fiona McAlister
Health Care Access Committee,
Patient Centered Outcomes
Research Committee

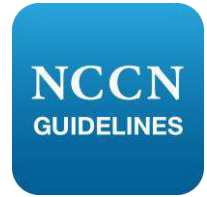


Anna Wilson
Patient Centered Outcomes
Research Committee

NRG Oncology NCORP Structure



NRG NCORP Impact: Changing the Standard of Care



- Major national guideline changes over this past grant period:
 - **R0614:** Memantine during whole brain RT reduces neurocognitive deterioration (*Neuro Oncol 2013*)
 - **R0933:** Hippocampal avoidance during whole brain RT leads to HVL preservation (*JCO 2014*)
 - **R1203:** IMRT reduces bowel toxicities (over 3D RT) from the patient perspective in postop GYN cancers (*JCO 2020*)
 - **CC001:** Further preservation of neurocognitive function using hippocampus avoidance with memantine during whole-brain RT (*JCO 2020*)
- **Accrual:** NRG NCORPs contribute ~33% to NRG treatment trials



NRG NCORP RESOURCES



NRG NCORP Pilot Grant Success!



Pilot Study: *Study to Evaluate Cardiovascular Risk Factors and Receipt of Primary and Preventive Care in Prostate Cancer Pts who Receive Definitive RT and ADT*



NRG-CC007CD: *Increasing the Dose of Survivorship Care Planning in Prostate Cancer Survivors who Receive Androgen Deprivation Therapy*

Holmes JA, Anderson RF, Hoffman LG, Showalter TN, Kasibhatla M, Collins SP, Papagikos MA, Barbosa BD, Stravers LJ, Mahbooba Z, Wang AZ, **Chen RC**. Cardiovascular preventive care and coordination of care in prostate cancer survivors: a multi-institutional prospective study. *Int J Radiat Oncol Biol Phys*, 103(1):112-5, 2019

NRG NCORP Can Build Careers



Vinai Gondi, MD

R0614: Memantine during whole brain RT reduces neurocognitive deterioration (*Neuro Oncol 2013*)

R0933: Hippocampal avoidance during whole brain RT leads to HVL preservation (*JCO 2014*)

CC001: Further preservation of neurocognitive function using hippocampus avoidance with memantine during whole-brain RT (*JCO 2020*)

CC003/ASTRO 2023 Plenary LBA 04: Phase IIR/III trial of prophylactic cranial irradiation with or without hippocampal avoidance for small cell lung cancer

Questions?



NCORP Contact Information

NCORP PIs

Deborah Bruner, PhD, RN, FAAN

deborah.w.bruner@emory.edu

Lisa Kachnic, MD; lak2187@cumc.columbia.edu

NCORP Deputy PI

Chair: Julie Bauman, MD; jebauman@gwu.edu

Cancer Control/Symptom Management

Chair: Tracy Crane, PhD;

tecrane@med.miami.edu

Vice-Chair: Mylin Torres, MD;

matorre@emory.edu

Cancer Prevention

Chair: Julie Bauman, MD; jebauman@gwu.edu

Vice-Chair: Stephanie Blank, MD;

Stephanie.Blank@mountsinai.org

Health Care Access

Chair: Jennifer Wenzel, PhD; jwenzel@jhu.edu

Vice-Chair: Evan Graboyes, MD; graboyes@muscc.edu

Cancer Care Delivery Research

Chair: Mary Cooley, PhD, RN, FAAN;

Mary_Cooley@dfci.harvard.edu

Vice-Chair: Sarah Hawley, PhD, MPH

sarahaw1@umich.edu

Patient Centered Outcomes Research

Chair: Ben Movsas, MD; BMOVAS1@hfhs.org

Vice-Chairs: Ronald Chen, MD; rchen2@kumc.edu

Budgets/Other NCORP Questions

Erica Field, MPH, MHA, NCORP Administrator;

fielde@nrگونcology.org

Overview of NCORP – Site Perspective

(Why Choose to be a Member of NCORP?)

Carolyn Muller, MD
New Mexico NCORP

- **NRG Winter Meeting**
- **January 22, 2026**





Disclosures

Clinical Trials: NM NCORP PI, Institution Site PI for GOG Partners Trials (Genmab, Merck, Gilead, Corcept, GSK, Immunogen), Linneus, Verastem

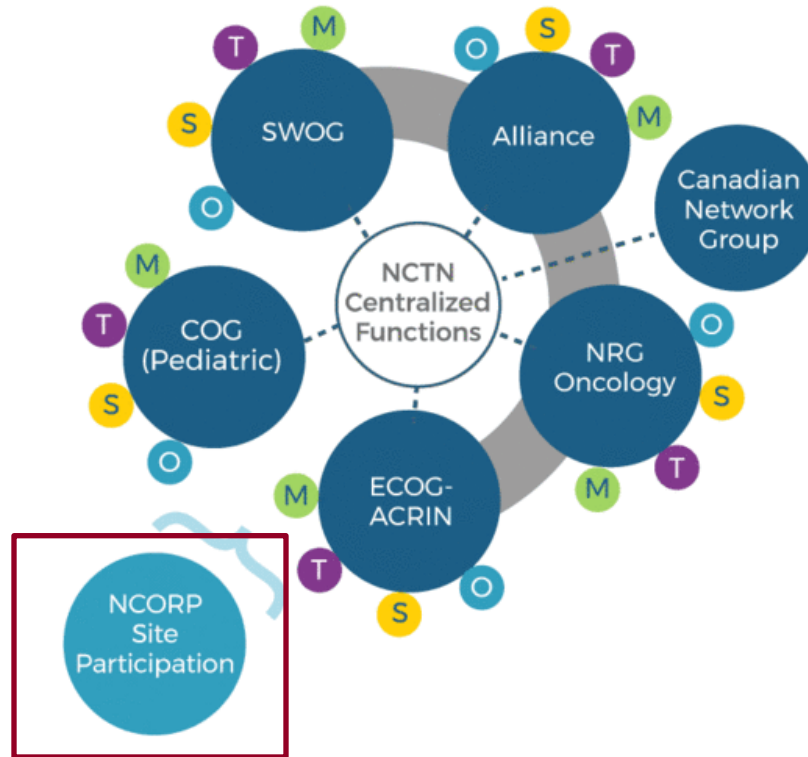
Advisory: Lilly

New Mexico Cancer Care Alliance: Board of Directors



NCI National Clinical Trials Network Structure

<https://www.cancer.gov/research/infrastructure/clinical-trials/nctn/nctn-clinical-trials-network>



LEGEND

- Centralized Functions:
 - Centralized Institutional Review Board
 - Cancer Trials Support Unit
 - Imaging and Radiation Oncology Core (IROC) Group
 - Common Data Management System Central Hosting
- 32 Lead Academic Participating Sites (LAPS)
- Operations
- S Statistics & Data Management
- T Tissue Banks
- M Member Sites

cancer.gov

Program of Division of Cancer Prevention: (prevention, cancer control, supportive care trials, Opportunity for Cancer Care Delivery Research (CCDR))

NCTN Participation: LAPS vs NCORP

Lead Academic Participating Sites (LAPS):

- source of funding created especially for the NCTN
- academic research institutions with fellowship training programs
- enroll high numbers of patients onto NCTN trials, scientific leadership in clinical trials

National Community Oncology Research Program (NCORP):

- conduct clinical trials in the community (can be with academic partnership)
- designs and conducts cancer prevention, supportive care and symptom management, screening, and surveillance clinical trials.
- participates in NCTN treatment and imaging clinical trials
- Opportunity for cancer care delivery trials and leadership across trial types

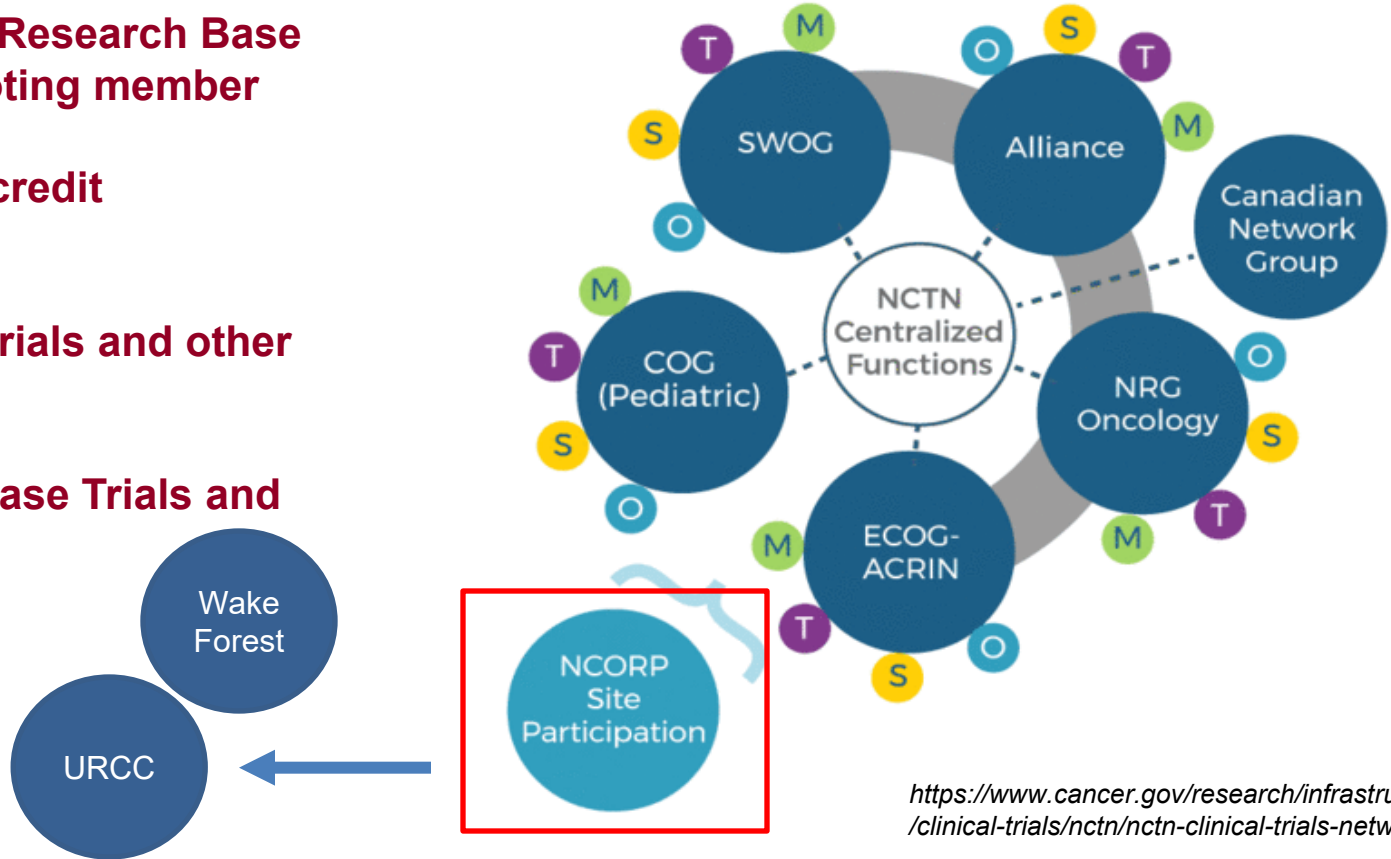
Benefits of NCORP

Member of NCTN Research Base (RB) – Metrics: Voting member

Non-member RB credit To member RB

Access all CTEP trials and other NCORP trials

Other Research Base Trials and collaborations



<https://www.cancer.gov/research/infrastructure/clinical-trials/nctn/nctn-clinical-trials-network>

Wake Forest Research Base – CC and CCCR

Title	Sponsor	NCI Protocol No.	Status	Trial Type
An Internet-based Program to Help Cancer Survivors Manage Pain	Wake Forest University Health Sciences	WF-1901	Recruiting	Supportive Care/Symptom Management/PROs
Assessing Benefits and Harms of Cannabis/Cannabinoid Use Among Cancer Patients Treated in Community Oncology Clinics	Wake Forest University Health Sciences	WF2304-A172401	Recruiting	Supportive Care/Symptom Management/PROs
Comparing Single vs Multiple Dose Radiation for Cancer Patients With Brain Metastasis and Receiving Immunotherapy	Wake Forest University Health Sciences	WF-2201	Recruiting	Supportive Care/Symptom Management/PROs

Title	Sponsor	NCI Protocol No.	Status	Trial Type
A Web-based Program to Help Caregivers of Lung Patients Learn About Available Supportive Care Resources	Wake Forest University Health Sciences	WF-2301CD	Enrolling by invitation	Cancer Care Delivery Research (CCDR)
Surgical Thromboprophylaxis Practices in Oncology Patients Within the NCORP Network, STOP-VTE Study	Wake Forest University Health Sciences	WF-2502CD	Not yet recruiting	Cancer Care Delivery Research (CCDR)
Understanding and Enhancing Health-Related Social Needs (HRSN) Screening Among Community Oncology Practices	Wake Forest University Health Sciences	WF-2303CD	Enrolling by invitation	Cancer Care Delivery Research (CCDR)

URCC Research Base – Cancer Control

Title	Sponsor	NCI Protocol No.	Status	Trial Type
Assessment of Cognitive Function in Breast Cancer and Lymphoma Patients Receiving Chemotherapy	University of Rochester NCORP Research Base	URCC-10055	Enrolling by invitation	Supportive Care/Symptom Management/PROs
Bupropion to Reduce Cancer Related Fatigue in Cancer Survivors	University of Rochester NCORP Research Base	URCC-18007	Recruiting	Supportive Care/Symptom Management/PROs
Comparing Brief Behavioral Therapy (BBT-CI) and Healthy Eating Education Learning (HEAL) for Cancer-Related Sleep Problems While Receiving Cancer Treatment	University of Rochester NCORP Research Base	URCC-19185	Recruiting	Supportive Care/Symptom Management/PROs
Geriatric Evaluation and Management with Survivorship Health Education (GEMS) for Older Survivors of Cancer	University of Rochester NCORP Research Base	URCC-19178	Recruiting	Supportive Care/Symptom Management/PROs
High-Dose Vitamin D Supplementation for ADT-Induced Bone Loss in Older Prostate Cancer Patients	University of Rochester NCORP Research Base	URCC-22053	Recruiting	Supportive Care/Symptom Management/PROs

New Mexico NCORP – Stakeholders

New Mexico Cancer Research Alliance – Board of Directors

- Oncology Providers from Each Participating Institution
 - Medical Oncology, Gyn Oncology, Surgical Oncology, Radiation Oncology and Pediatric Oncology
- Tumor Registry Expert
- Population Sciences – Community Outreach and Engagement
- Financial Expert
- Patient Advocates (2)

Virtual Monthly Community Oncology Meeting

1/15/2025, [5:30 PM:](#)

Guest: Heme; Cell Based Therapeutics

2/19/2025, [5:30 PM:](#)

Guest CWG: GI ; *Newly Approved Trials*

3/19/2025, [5:30 PM:](#)

Guest CWG: Gyn Onc; *Tumor Registry*

4/16/2025, [5:30 PM:](#)

Guest CWG: Peds/AYA; *Tumor Registry*

5/21/2025, [5:30 PM:](#)

Guest CWG: GU; *Precision Medicine*

6/18/2025, [3pm-6pm:](#)

NMCRA In-Person Retreat!

7/16/2025, [5:30 PM:](#)

Guest: Rad Oncology; Precision Medicine

8/20/2025, [5:30 PM:](#)

Guest CWG: Breast; *Newly Approved Trials*

9/17/2025, [5:30 PM:](#)

Guest CWG: Heme; *Tumor Registry*

10/15/2025, [5:30 PM:](#)

Guest CWG: Lung; *Precision Medicine*

11/19/2025, [5:30 PM:](#)

Guest CWG: GU; *Newly Approved Trials*

Also features CCDR or Cancer Control Trials

NMCRA Scientific Retreat – Community Partners

Interactions



Chandylen Nightingale, PhD, MPH
Wake Forest Research Base

- Annual scientific retreat
 - NCORP education, trial needs
- Monthly virtual meeting ideas
- Centralized services review
 - regulatory, QA, Finance
- All-site representation (teams)
- New Mexico Tumor Registry
 - Unmet needs per population
 - Regional disease patterns

NMCRA Site Activity: 5 Year Accrual

	Cancer Control			Treatment			Total		
	Accrual	Biospecimens	Special Entries	Accrual	Biospecimens	Special Entries	Accrual	Biospecimens	Special Entries
NM001	0	0	1	0	0	0	0	0	1
NM004	348	250	875	345	609	163	693	859	1,038
NM005	42	2	63	45	89	14	87	91	77
NM010	0	0	0	2	4	5	2	4	5
NM039	27	0	155	34	94	10	61	94	165
NM041	0	0	7	2	0	1	2	0	8
NM043	0	0	4	4	0	0	4	0	4
NM046	29	7	29	15	30	9	44	37	38
NM050	1	0	0	3	7	0	4	7	0
Total	447	259	1,134	450	833	202	897	1,092	1,336

NCORP Community Oncology Program

- **Challenges:**
 - Continued Stakeholder Engagement
 - Community Partner Fiscal and Administrative Pressures
 - Cost and Trial Reimbursement
 - Staffing
- **Opportunities**
 - Focus on Key Trials with Trial Champions
 - Train and Engage Advanced Practice Providers – Cancer Control and Supportive Care Trials
 - Decentralized Trials Management (ie: remote consent, etc.)

Acknowledgements

- **We are grateful to ALL the stakeholders within our statewide clinical trials network – the New Mexico Cancer Research Alliance (NMCRA) and all the community partners involved in providing access to clinical trials across NM.**
 - University of New Mexico Cancer Center (*and VA Hospital*)
 - Presbyterian Health Systems
 - Lovelace Health Systems
 - Memorial Medical Center
- **Funded by NCI 2UG1CA189856-11**

