

# SYMPOSIUM FINAL PROGRAM

*IT'S A PARP WORLD AFTER ALL*

January 9, 2020  
NRG Oncology Semiannual Meeting  
Marriott Marquis  
Houston, Texas



**GOG** FOUNDATION®  
Transforming the standard of care

*Sponsored by the GOG Foundation, Inc.*

# CME CREDIT INFORMATION



## Accreditation Statement

The GOG Foundation, Inc. is accredited by the Accreditation Council for Continuing Medical Education (ACCME) to provide Continuing Medical Education for physicians.

## AMA PRA Category 1 Credits™

The GOG Foundation, Inc. designates this live activity for a maximum of **4.5 AMA PRA Category 1 Credits™**. Physicians should claim only the credit commensurate with the extent of their participation in the activity.

## The GOG Foundation Inc. Continuing Medical Education (CME) Program Mission Statement

The purpose of The GOG Foundation, Inc. CME program is to provide and promote an infrastructure dedicated to enhancing the knowledge base of meeting participants and guests centered on the development, execution, analysis and application of GOG-supported clinical trials. To that end, the CME Program engages in these discussions member researchers and invited clinicians committed to reducing the risk and improving outcomes for women at risk for or afflicted with a gynecologic malignancy.

## CME/Certificate Instructions - NEW!

Attendees should receive a CME code for the Symposium to be entered into the Program App, this code acknowledges your attendance.

To receive your CME certificate, you must complete the Symposium evaluation on the Program App. Evaluations must be completed by February 1, 2020. All certificates will be sent directly to you by email by the system. The sender will be jreese@gog.org.

Additional information will be available at the CME desk and the entrance door of the Symposium.

## Disclosure Information

In compliance with ACCME regulations, The GOG Foundation, Inc., as the accredited provider of this activity, must ensure that anyone in a position to control the content of the educational activity has disclosed all relevant financial relationships with any commercial interest. All reported conflicts are managed by a designated official to ensure a bias-free presentation. Please see the faculty disclosure on page 2 of this program for detailed information.

For questions or comments about this CME activity, please contact :

Michelle N. Small, Director, Education Programs and CME Compliance of The GOG Foundation, Inc. at: msmall@gog.org

## TABLE OF CONTENTS

CME Credit Information.....	1
Faculty Disclosure List.....	2
Program Description/Learning Objectives.....	4
Program Agenda.....	5
Faculty Listing.....	6
Presentation Information.....	8
Faculty Bios .....	9
Commercial Support.....	17

**Faculty Disclosure Information**  
**The GOG Foundation, Inc.**  
**Symposium, “It’s a PARP World After All” - January 9, 2020 – Houston, Texas**

In accordance with the ACCME Accreditation Criteria, The GOG Foundation, Inc. as the accredited provider of this activity must ensure that anyone in a position to control the content of the educational activity has disclosed all relevant financial relationships with any commercial interest. Members of the Program Committee were required to disclose all financial relationships and speakers were required to disclose any financial relationship as it pertains to the content of the presentations. The ACCME defines a “commercial interest” as any entity producing, marketing, re-selling, or distributing health care goods or services consumed by, or used on, patients. The ACCME does not consider providers of clinical service directly to patients to be commercial interests. “Relevant” financial relationships are financial transactions (in any amount) occurring within the past 12 months that may create a conflict of interest.

All program committee members and speakers were contacted and the conflicts listed below have been managed to our satisfaction. However, if you perceive a bias during a session, please report the circumstances on the session evaluation form.

Please note we have advised the speakers that it is their responsibility to disclose at the start of their presentation if they will be describing the use of a device, product, or drug that is not FDA approved or the off-label use of an approved device, product, or drug or unapproved usage.

The requirement for disclosure is not intended to imply any impropriety of such relationships, but simply to identify such relationships through full disclosure, and to allow the audience to form its own judgments regarding the presentation.

NAME	NOTHING TO DISCLOSE	DISCLOSURE
<b>Speakers/Moderators</b>		
James Abbruzzese, MD		Scientific Advisory Board/Honorarium: AstraZeneca Consulting/Scientific Advisory Board/Honorarium: Fujifilm DSMB/Honorarium: Haylozyme; Sun Biopharma; Celgene Scientific Advisory Board/Consulting/Stock Options: Bessor Pharma; Molculin Biotech
Lisa Barroihet, MD	X	
Michael Bookman, MD		Member/Protocol Steering Committee/Consulting Fee: AbbVie; Aravive Member/Ovarian Cancer Advisory Board/Consulting Fee: Merck; AstraZeneca
Robert Coleman, MD		PI/Grant Support: AstraZeneca; Clovis; Merck; Roche; Esperance; Janssen; Genmab; AbbVie Consultant/Honorarium: AstraZeneca; Clovis; Merck; Roche; Esperance; Janssen; Genmab; AbbVie; Bayer; Tesaro; Takeda
Leisha Emens, MD, PhD		Consulting/Advisory Board/Honorarium: AbbVie; Amgen; AstraZeneca; Bayer; Bristol Myers Squibb; Celgene; Genentech; Gristone; Medimmune; Macrogenics; Novartis; Peregrine; Replimune; Roche; Syndax; Vaccinex Research Funding: Aduro Biotech; AstraZeneca; Breast Cancer Research Foundation; Bristol Myers Squibb; Corvus; Department of Defense; EMD Serono; Genentech; HeritX, Inc.; Maxcyte; National Cancer Institution; NSABP Foundation; Roche; Translational Breast Cancer Research Consortium, Royalties: Aduro Biotech
Stephanie Gaillard, MD, PhD		Advisory Board Member/Consulting Fee: Immunogen GBMC Grand Rounds/Honorarium: AstraZeneca Cervical Cancer Talk/Honorarium: Physician Education Resources Review of Management of Endometrial Stromal Sarcoma/Royalties: UpToDate
Charles Geyer, MD		PI/Travel: AstraZeneca; Genentech/Roche; Daiichi/Sankyo
Gottfried Konecny, MD		Speaker: Clovis; GlaxoSmithKline/Tesaro; Merck; AstraZeneca
Jung-Min Lee, MD	X	
Jennifer Litton, MD		Advisory Board/Steering Committee/Research to Institute: Pfizer/Medivation Advisory Board/Research to Institute: AstraZeneca Research to Institute: Genentech; EMD-Serono; Zenith

Joyce Liu, MD		Advisory Board Participation/Consulting Fee: Tesaro; Clovis; Genentech Advisory Board Participation/Travel: Merck; AstraZeneca
Ursula Matulonis, MD		Consultant/Honorarium: Novartis; Merck; Immunogen
Kathleen Moore, MD		Speaker/Advisory Boards/Consultant/Honorarium: AstraZeneca; Immunogen; Merck; Mersana; OncLive; Tesaro; NCI; GlaxoSmithKline; Roche; Carrick Foundation Medicine; Bayer; Curio Science; Clovis; Samumed
Bobbie J. Rimel, MD		Advisory Board/Consulting: Tesaro; AstraZeneca; Clovis Consulting: Deep 6 AI
Ritu Salani, MD		Advisory Board/Consulting Fee: Clovis; AstraZeneca; Iovance
Oliver Sartor, MD		Consultant/Fee: Advanced Accelerator Applications; Astellas; AstraZeneca; Bellicum; Blue Earth Diagnostics, Inc.; Bravarin Nordic; Bristol Myers Squibb; Clovis; Constellation; EMD Serono; Myriad; Noxopharm; Progenics; Myovant; Pfizer Consultant/Research Support/Fee/Grant: Bayer; Dendreon; Janssen; SOTIO Consultant/Expert Testimony/Fee/Grant: Sanofi Research Support/Grant: Endocyte; Innocrim; Invitae Merck
Angeles Alvarez Secord, MD, MHSc		Institutional Salary for Research and Adboards: AbbieVie, Astellas Pharma, PharmaMar, Immutep Ltd, TapImmune Seattle Genetics, VBL Therapeutic: Adboards; AstraZeneca, Clovis, Eisai, Merck, Roche/Genentech; Tesaro/GSK; Honoraria: Aravive, Janssen/Johnson & Johnson, Mersana, Oncoquest Clinical trial steering committee; no compensation from Roche/Genentech, VBL Therapeutics
Shannon Westin, MD, MPH		Consulting Fee/Research Support: AstraZeneca; Clovis; Roche/Genentech; Tesaro; Novartis; Merck; Pfizer; Takeda; ArQule; Bayer
Dmitriy Zamarin, MD, PhD		Consulting/Fee: Agenus; Western Oncolytics
<b>Planning Committee Members</b>		
Angeles Alvarez Secord, MD, MHSc		Institutional Salary for Research and Adboards: AbbieVie, Astellas Pharma, PharmaMar, Immutep Ltd, TapImmune Seattle Genetics, VBL Therapeutic: Adboards; AstraZeneca, Clovis, Eisai, Merck, Roche/Genentech; Tesaro/GSK; Honoraria: Aravive, Janssen/Johnson & Johnson, Mersana, Oncoquest Clinical trial steering committee; no compensation from Roche/Genentech, VBL Therapeutics
Joyce Liu, MD, MPH		Advisory Board Participation/Consulting Fee: Tesaro; Clovis; Genentech Advisory Board Participation/Travel: Merck; AstraZeneca
Michelle Small (Reviewer)	X	
Ronald D. Alvarez, MD (Reviewer)		Unleash, Consultant/Honorarium; Advisory Board/Honorarium; TAbbvie; Tesaro; Genentech; Eisai



## PROGRAM DESCRIPTION, LEARNING OBJECTIVES

Winter Symposium, “It’s a PARP World After All” - January 9, 2020 – Houston, Texas

### PROGRAM DESCRIPTION:

**Program Chairs:** Angeles Alvarez Secord, MD, MHSc, Joyce Liu, MD, MPH

The Winter 2020 GOG Foundation, Inc. Educational Symposium is titled “It’s a PARP World After All” with noted Oncologists and Scientists serving as speakers and moderators. The targeted audiences are members and non-members of the NRG research teams to include: Gynecologic Oncologists, Medical Oncologists, Radiation Oncologists, Pathologists, and other MDs engaged in oncology research and/or clinical practice; Oncology Nurses, Nurse-practitioners, and other interested Allied Health professionals. The speakers will focus their presentations on the use of PARP inhibitors across solid tumor disease types. PARP inhibitors have demonstrated efficacy in ovarian, breast, prostate, and pancreatic cancer.

The use of PARP inhibitor (PARPi) therapy has ushered in a new era and dramatically changed the management of ovarian cancer as well as several different solid tumor malignancies. “It’s a PARP World After ALL” GOG Foundation Symposium provides an excellent opportunity to explore the use of PARPi in ovarian, cervical, endometrial, breast, prostate, and pancreatic cancers. The latest practice-changing clinical trial results will be provided and reviewed in context with challenging clinical practice scenarios in cancer patients treated with PARPi. This symposium activity will provide evidence-based perspectives regarding controversial topics in ovarian and breast cancer management. The information that will be provided has potential practice-changing implications that be translated into clinical arena immediately. Moreover mechanisms of resistance to PARPi as well as the latest information on combination PARPi combinations will be reviewed. Interactive case vignettes will help attendees to better identify, manage, and mitigate PARPi toxicity. Ongoing and planned pivotal clinical trials will be discussed and the future of clinical trial design in the era of PARPi therapy will be explored.

### LEARNING OBJECTIVES:

**Following this activity, participants will be better able to:**

- Describe the development of PARP inhibitors and understand mechanism of action and development of resistance to PARP inhibition
- Describe use of PARP inhibitors in gynecologic, breast, prostate, and pancreatic malignancies
- Detail management of PARP inhibitor related adverse events



# Winter 2020 Symposium

Program Co-Chairs: Angeles Alvarez Secord, MD, MHSc and Joyce Liu, MD, MPH

Time	Topic	Speaker/Moderator
7:00 AM	REGISTRATION	
8:00 AM	WELCOME	Program Chairs: Angeles Alvarez Secord, MD, MHSc and Joyce Liu, MD, MPH
8:05-9:40	SESSION I: "PARPi Evolution in Gynecologic Cancer"	Moderators: Angeles Alvarez Secord, MD and Stéphanie Gail- lard, MD, PhD (Scholar)
8:05-8:25	PARPi Landscape in Ovarian Cancer	Joyce Liu, MD, MPH
8:25-8:45	Front-line Ovarian PARPi Maintenance Crossfire	Michael Bookman, MD versus Kathleen Moore, MD, MS
8:45-9:05	Expanding PARPi Horizons in Gynecologic Cancers	Ritu Salani, MD, MBA (Scholar) and Bobbie J. Rimel, MD Tag Team Presentation
9:05-9:25	Future of Clinical Trial Design in the New PARPi World	Robert L. Coleman, MD
9:25-9:40	PANEL DISCUSSION; QUESTIONS AND ANSWERS	All
9:40-9:55	BREAK	
9:55-11:30	SESSION II "Every-PARPi-Thing Under the Sun"	Moderator: Charles Geyer, Jr, MD
9:55-10:15	Evolution of PARPi in Breast Cancer	Charles E. Geyer, Jr, MD
10:15-10:35	PARPi or Immunotherapy? Breast Cancer Crossfire	Pro-PARPi: Jennifer K. Litton, MD Pro-IO: Leisha A. Emens, MD, PhD
10:35-10:55	PARPi Therapy in Prostate and Other Genitourinary Cancers	Oliver Sartor, MD
10:55-11:15	New Frontiers of PARPi Therapy in Pancreatic and Gastrointestinal Cancers	James L. Abbruzzese, MD
11:15-11:30	Panel Discussion/Questions and Answers	All
11:30-12:30	BREAK (Lunch)	
12:30-1:45	SESSION III: "PARPi Landmines and Opportunities"	Moderators: Jung-Min Lee, MD Dmitriy Zamarin, MD, PhD
12:30-12:50	Identify, Manage, and Mitigate PARPi Toxicity	Ursula A. Matulonis, MD and Lisa Barroilhet, MD (Scholar) - to provide cases
12:50-1:10	Exploring Mechanisms of PARPi Resistance	Gottfried Konecny, MD
1:10-1:30	Exploding World of PARPi Combinations	Shannon N. Westin, MD, MPH (Scholar)
1:30-1:45	Panel Discussion/Questions and Answers	All

## Program Chairs/Moderators

### Angeles Alvarez Secord, MD, MHSc

Professor, Division of Gynecologic Oncology  
 Director of Gynecologic Oncology Clinical Trials  
 Associate Director of Clinical Research, Gyn Oncology  
 Duke Cancer Institute  
 Duke University Medical Center  
 Durham, NC

### Joyce Liu, MD, MPH

Assistant Professor of Medicine  
 Dana Farber Cancer Institute and Harvard Medical School.  
 Director of Clinical Research, Division of Gynecologic Oncology  
 Dana Farber Cancer Institute  
 Boston, MA

## Speakers/Moderators

### James L. Abbruzzese, MD, FACP, FASCO, DSc (hon)

DCI Distinguished Professor of Medical Oncology  
 Chief, Division of Medical Oncology, Department of Medicine  
 Associate Director for Clinical Research, Duke Cancer Institute  
 Duke University Medical Center  
 Durham, NC

### Charles E. Geyer, Jr., MD

Deputy Director  
 Houston Methodist Cancer Center  
 Breast Medical Oncology  
 Houston, TX

### Lisa Barroilhet, MD

Associate Professor, Director of Clinical Research  
 Gynecologic Oncology  
 Doloroes Buchler Endowed Research Fellow  
 Department of Obstetrics and Gynecology  
 University of Wisconsin School of Medicine and Public Health  
 Madison, WI

### Jung-Min Lee, MD

Investigator, Lasker Clinical Research Scholar  
 Women's Malignancies Branch  
 Center for Cancer Research  
 National Cancer Institute  
 Bethesda, MD

### Robert L. Coleman, MD

Professor & Executive Director, Cancer Network Research  
 Ann Rife Cox Chair in Gynecology  
 Dept of Gynecologic Oncology and Reproductive Medicine  
 UT MD Anderson Cancer Center  
 Dept of Gynecologic Oncology  
 Houston, TX

### Jennifer Keating Litton, MD

Professor, Department of Breast Medical Oncology  
 Clinical Cancer Genetics  
 The University of Texas MD Anderson Cancer Center.  
 Houston, TX

### Leisha A. Emens, MD, PhD

Professor of Medicine  
 UPMC Hillman Cancer Center/Magee Women's Hospital  
 Director of Translational Immunotherapy for the Women's Cancer Research Center  
 Co-Leader, Hillman Cancer Immunology/Immunotherapy Program  
 Pittsburgh, PA

### Ursula A. Matulonis, MD

Chief, Division of Gynecologic Oncology  
 Brock-Wilson Family Chair  
 Dana-Farber Cancer Institute  
 Professor of Medicine, Harvard Medical School  
 Boston, MA

### Stéphanie Gaillard, MD, PhD

Director, Gyn Cancer Trials  
 Assistant Professor, Oncology  
 Assistant Professor, Gynecology & Obstetrics  
 Johns Hopkins School of Medicine  
 Baltimore, MD

### Kathleen Moore, MD, MS

Jim and Christy Everest Endowed Chair in Cancer Research  
 Associate Director Clinical Research  
 Director, Oklahoma TSET Phase I Program  
 Stephenson Cancer Center  
 Associate Professor, Section of Gynecologic Oncology  
 Director Gynecologic Oncology Fellowship  
 Department of Obstetrics and Gynecology  
 University of Oklahoma Health Sciences Center  
 Oklahoma City, OK

**Bobbie J. Rimel, MD**

Assistant Professor, Division of Gynecologic Oncology  
Department of Obstetrics and Gynecology  
Cedars-Sinai Medical Center  
Health Sciences Assistant Clinical Professor  
Department of Obstetrics and Gynecology  
UCLA School of Medicine  
Los Angeles, CA

**Ritu Salani, MD, MBA**

Professor, Division of Gynecologic Oncology  
Department of Obstetrics & Gynecology  
The Ohio State University Comprehensive Cancer Center -  
Arthur G. James Cancer Hospital and Richard J. Solove Research  
Institute  
Columbus, OH

**Oliver Sartor, MD**

C.E. & Bernadine Laborde Professor for Cancer Research  
Medical Director, Tulane Cancer Center  
Assistant Dean for Oncology  
Tulane Medical School  
New Orleans, LA

**Shannon N. Westin MD, MPH**

Associate Professor  
Director, Early Drug Development  
Dept. of Gynecologic Oncology and Reproductive Medicine  
UT MD Anderson Cancer Center  
Houston, TX

**Dmitriy Zamarin, MD, PhD**

Assistant Attending Physician and Translational Research Director  
Gynecologic Medical Oncology Service  
Memorial Sloan Kettering Cancer Center  
New York, NY





## SPEAKER SLIDE PRESENTATIONS

Thank you for registering for this symposium. Presentations are no longer printed in the final program so that our attendees have the most updated version of each speaker's presentations.

You can now access a PDF version of all FINAL slide presentations presented at this symposium using the following link:

<https://www.nrgoncology.org/Resources/Meetings/SymposiumSlides>

This link has been sent to the email you provided during registration and will only be accessible for two weeks.

Thank you for your continued support, have a great meeting!

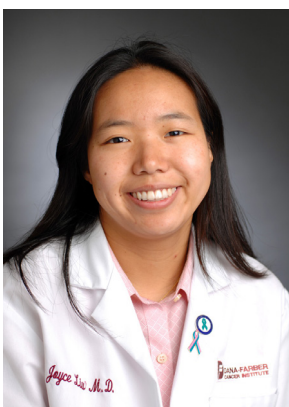
## Faculty Bios - Program Chairs



### **Angeles Alvarez Secord, MD, MHSc**

Professor, Division of Gynecologic Oncology  
Director of Gynecologic Oncology Clinical Trials  
Associate Director of Clinical Research, Gyn Oncology  
Duke Cancer Institute  
Duke University Medical Center  
Durham, NC  
(Moderator for Session I)

Angeles Alvarez Secord, M.D., M.H.Sc., is a Professor in the Division of Gynecologic Oncology at Duke University Medical Center. She graduated AOA with Honors from the University of Washington School of Medicine. She completed her residency in Obstetrics and Gynecology and her fellowship in Gynecologic Oncology at Duke University Medical Center. Upon completing her oncology fellowship in 2001, she accepted a faculty position within the Division of Gynecologic Oncology at Duke. Dr. Secord has received awards from Duke University Medical Center, the Mid-Atlantic Gynecologic Oncology Society, the Society of Gynecologic Oncologists, the Gynecologic Oncology Group, and the Foundation for Women's Cancer for her research in angiogenesis in ovarian carcinoma. She is currently the Director of Gynecologic Oncology Clinical Trials, the Associate Director of Clinical Research, Gynecology Oncology, one of the Principal Investigators for NRG Oncology at the Duke Cancer Institute. In addition, she serves as a member on the NRG Oncology Group Developmental Therapeutics Committee, and Ovarian Cancer Committee. She is also a New Investigator Committee Co-Chair, GOG-Foundation Education and Mentoring Co-Chair, and AAOGF Scholar Committee Chair and is dedicated to mentoring future oncology leaders. Dr. Secord has also served on the National Cancer Institute Ovarian Cancer Task Force. Dr. Secord's research interests include development of novel therapeutics and biomarkers in ovarian cancer, novel clinical trial designs, the role of obesity in gynecologic malignancies, and the development of patient-centric composite clinical endpoints. Dr. Secord is a fellow of the American College of Obstetricians and Gynecologists as well as being an active member of the Society of Gynecologic Oncology, American Society of Clinical Oncology, American Gynecological & Obstetrical Society, and International Gynecologic Cancer Society. Dr. Secord has authored more than 180 peer-reviewed articles along and has been the recipient of numerous clinical trial and basic research grants.



### **Joyce Liu, MD, MPH**

Assistant Professor of Medicine  
Dana Farber Cancer Institute and Harvard Medical School.  
Director of Clinical Research, Division of Gynecologic Oncology  
Dana Farber Cancer Institute  
Boston, MA

Joyce Liu, MD, MPH is an Assistant Professor of Medicine at Dana Farber Cancer Institute and Harvard Medical School. She is a medical oncologist specializing in the treatment of women with gynecologic malignancies and is the Director of Clinical Research for the Division of Gynecologic Oncology at Dana Farber Cancer Institute. Dr. Liu received her medical degree from Harvard Medical School and subsequently completed her residency in Internal Medicine at Brigham and Women's Hospital and her fellowship in Medical Oncology at Dana-Farber Cancer Institute. She also has a Master of Public Health from the Harvard School of Public Health. Dr. Liu's research focuses on identifying and validating novel therapies and therapeutic combinations for gynecologic cancers. She is an active member of NRG, where she is a member of the Developmental Therapeutics committee and is the study chair of NRG-GY004, testing olaparib monotherapy or the combination of cediranib and olaparib compared to standard chemotherapy in relapsed ovarian cancer. She has received grant support from the National Cancer Institute, the American Society of Clinical Oncology (ASCO), and the Ovarian Cancer Research Fund Alliance. She has served on ASCO guideline committees and is a member of the NCCN Ovarian Cancer Panel.



## Faculty Bios -Speakers and Moderators



### **James L. Abbruzzese, MD, FACP, FASCO, DSc (hon)**

DCI Distinguished Professor of Medical Oncology  
Chief, Division of Medical Oncology, Department of Medicine  
Associate Director for Clinical Research, Duke Cancer Institute  
Duke University Medical Center  
Durham, NC

James L. Abbruzzese, M.D., is the Chief of the Duke Division of Medical Oncology and serves as the Associate Director for Clinical Research for the Duke Cancer Institute (DCI). Dr. Abbruzzese is a leading expert in the clinical study and treatment of pancreatic cancer, and his management experience and vision for clinical research support cancer care and research at Duke. Before moving to Duke, he held the Waun Ki Hong Distinguished Chair in Translational Oncology and he was Chairman of the Department of Gastrointestinal Medical Oncology and Digestive Diseases at the University of Texas M. D. Anderson Cancer Center in Houston. Currently he holds the Duke Cancer Institute Distinguished Professor of Medical Oncology at Duke University.

Dr. Abbruzzese earned his medical degree with honors from the University of Chicago, Pritzker School of Medicine and completed his residency in Internal Medicine at Johns Hopkins Hospital. He also completed clinical fellowships in Infectious Diseases at the Johns Hopkins Hospital and in Medical Oncology and the Research Laboratory of Neoplastic Disease Mechanisms under Dr. David Livingston at the Dana-Farber Cancer Institute of Harvard Medical School. Before his recruitment to Duke University he spent most of his professional career at M.D. Anderson, where he progressed through the ranks to assume leadership positions as Chairman of the Department of Gastrointestinal Medical Oncology and Associate Vice-Provost for Clinical Research.

Among his many accomplishments, Dr. Abbruzzese is a Fellow of the American College of Physicians and Fellow of the American Society of Clinical Oncology. He has co-authored more than 450 research publications and numerous book chapters and is the immediate past Chair of the Clinical Trials and Translational Research Advisory Committee of the National Cancer Institute. He currently serves as the Chair of the NCI Pancreatic Ductal Adenocarcinoma Progress Working Group.



### **Lisa Barroilhet, MD**

Associate Professor, Director of Clinical Research  
Gynecologic Oncology  
Doloroes Buchler Endowed Research Fellow  
Department of Obstetrics and Gynecology  
University of Wisconsin School of Medicine and Public Health  
Madison, WI

Lisa Barroilhet, MD is an Associate Professor in the department of Obstetrics and Gynecology at the University of Wisconsin School of Medicine and Public Health. She completed her four-year residency in obstetrics and gynecology at University of North Carolina-Chapel Hill. After finishing her residency in 2009, she completed her three-year clinical and research fellowship in gynecologic oncology at Brigham and Women's Hospital in Boston, Massachusetts. Dr. Barroilhet joined the University of Wisconsin Department of Obstetrics and Gynecology in 2012. She has been the recipient of the NCI Clinical Care Team Leadership Award, an institutional K award, and is currently a GOG Scholar Investigator. Her primary research interest is drug development for the treatment and prevention of ovarian cancer. Dr. Barroilhet has published in numerous peer-reviewed journals and has been active in presenting research at national conferences. She has been recognized with multiple awards by her peers for exemplary teaching of residents and staff as well as patient care.



**Robert L. Coleman, MD**

Professor & Executive Director, Cancer Network Research  
Ann Rife Cox Chair in Gynecology  
Dept of Gynecologic Oncology and Reproductive Medicine  
UT MD Anderson Cancer Center  
Dept of Gynecologic Oncology  
Houston, TX

Robert Coleman, MD is Professor, in the Department of Gynecologic Oncology and Reproductive Medicine at the University of Texas, M.D. Anderson Cancer Center and holds the Ann Rife Cox Chair in Gynecology and serves as Executive Director, Cancer Network Research. His research interests include drug discovery and novel therapeutics for ovarian, uterine, and cervical cancer, clinical trial development and statistical design. He is PI or co-PI for several CTEP-funded prospective clinical trials including those supporting the MDACC Ovarian and Uterine SPORes, as well as, several partnered pharmaceutical sponsored trials. He is a project lead on the MDACC Gynecologic Cancer Moonshot and serves as a dyad Director of GOG-Partners, a clinical trials component of GOG Foundation, Inc. He has authored or coauthored over 500 scientific publications, including over 290 peer-reviewed original research articles.



**Leisha A. Emens, MD, PhD**

Professor of Medicine  
UPMC Hillman Cancer Center/Magee Women's Hospital  
Director of Translational Immunotherapy  
Women's Cancer Research Center  
Co-Leader, Hillman Cancer Immunology/Immunotherapy Prgm  
Pittsburgh, PA

Leisha A. Emens, M.D., Ph.D., is a Professor of Medicine at the UPMC Hillman Cancer Center. She received her B.A. in Biochemistry and Cell Biology from the University of California at San Diego. She received her MD and PhD in the Medical Scientist Training Program (MSTP) at Baylor College of Medicine, pursuing graduate work in immunology and cell biology. She completed a postdoctoral fellowship in oncology at the National Cancer Institute and internal medicine residency training at the University of Texas at Southwestern before joining the fellowship programs in hematology and oncology at Johns Hopkins University in 1998. She trained in tumor immunology as a senior clinical and research fellow before joining the faculty at Johns Hopkins University in 2001, where she rose to the rank of Associate Professor of Oncology before joining the UPMC Hillman Cancer Center. She is a medical oncologist with an outpatient service focused on breast cancer, and is internationally recognized for her work in breast cancer immunotherapy. She has identified novel immune-modulating activities associated with targeted cancer drugs in preclinical models, and develops synergistic immunotherapy combinations for translation to the clinic. She developed a breast cancer vaccine for breast cancer patients, has most recently played a key role in the clinical development of the anti-PD-L1 agent atezolizumab from preclinical evaluation of PD-L1 in human breast tumors to Phase 1 and late phase clinical trials, resulting in FDA approval of the first immunotherapy in breast cancer, atezolizumab with nab-paclitaxel for advanced triple negative breast cancer. Dr. Emens currently serves as a member of the Board of Directors of the Society for Immunotherapy of Cancer (SITC), and section editor for Journal for the Immunotherapy of Cancer (JITC). She is a former Chair of both the Communications Committee and the Stakeholder's Council for SITC, and remains on the SITC Stakeholder's Council. Dr. Emens was a member of the FDA Advisory Committee on Cellular, Tissue, and Gene Therapies (CTGTC) 2012-2016. She is an active member of ASCO, AACR, and SITC, and is a steering committee member of the Cancer Immunology (CIMM) Working Group of the AACR. Dr. Emens was awarded the President's Award by the YWCA of Greater Baltimore and the Maryland Governor's Citation for her work, and at UPMC is a Hillman Fellow for Team Science and Innovative Cancer Research.



**Stéphanie Gaillard, MD, PhD**

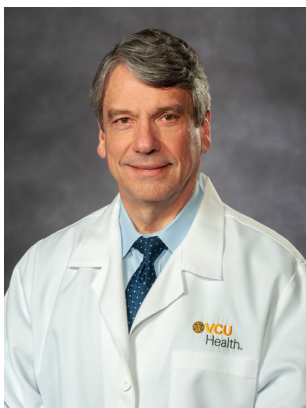
Director, Gyn Cancer Trials  
Assistant Professor, Oncology  
Assistant Professor, Gynecology & Obstetrics  
Johns Hopkins School of Medicine  
Baltimore, MD

Stéphanie Gaillard, MD, PhD is a medical oncologist who specializes in the treatment of gynecologic malignancies, including ovarian, endometrial, and cervical cancers. She is an assistant professor of Oncology and Gynecology/Obstetrics and is the Director of Gynecologic Cancer Trials at the Johns Hopkins Sidney Kimmel Comprehensive Cancer Center.

Dr. Gaillard earned an M.D. and a Ph.D. in cancer biology from Duke University. She completed residency training in Internal Medicine and fellowship training in Medical Oncology at the Johns Hopkins School of Medicine. Prior to joining the faculty at Johns Hopkins, she was a faculty member at Duke University Medical Center. She is board certified in Medical Oncology.

Dr. Gaillard's research focuses on the development of clinical trials aimed at improving outcomes using promising new biologic, targeted, and immune therapies in addition to standard treatment regimens. Her translational research program focuses on understanding mechanisms of resistance to therapy and the immune environment associated with gynecologic cancers. In addition, Dr. Gaillard serves as the Co-Chair of the NRG Oncology Phase I sub-committee.

Dr. Gaillard has been honored with several awards in her career, including the Liz Tilberis Early Career Award from the Ovarian Cancer Research Fund, the Young Investigator Award from the Conquer Cancer Foundation. She was a NIH BIRCWH (Building Interdisciplinary Research Careers in Women's Health) Scholar and is a current 2019 GOG Foundation Scholar Investigator Award recipient. She is the principal or co-author of numerous publications and book chapters and has traveled nationally and internationally to present her research.



**Charles E. Geyer, Jr., MD**

Deputy Director  
Houston Methodist Cancer Center  
Breast Medical Oncology  
Houston, TX

Charles E. Geyer, Jr., MD is Deputy Director of the Houston Methodist Cancer Center and has devoted most of his academic career on the design and conduct of multi-institutional, phase III clinical trials in breast cancer with a focus on the development of HER2 targeted therapies. He has served in several leadership positions for multi-institution research initiatives which include vice-chair of the National Surgical Adjuvant Breast and Bowel Project (NSABP) Breast Committee from 1999 until 2007, Associate Director of Medical Affairs from 2002 to 2006 and Director of Medical Affairs for NSABP from 2006 to 2011. Currently he serves as vice chair of the NRG Breast Committee and chair of the NSABP Foundation Breast Cancer Committee and is study PI for NSABP B-55 (OlympiA), a global phase III study of olaparib as adjuvant therapy for patients with germ line BRCA mutations and high risk early breast cancer, as well as NRG BR004.

In 2008, he was appointed as a founding Co-chair for the NCI Cancer Treatment Evaluation Program Breast Cancer Steering Committee and received a Director's Award at the completion of his tenure in 2011. Dr. Geyer has co-authored over 70 peer-reviewed manuscripts including results of several landmark phase 3 trials conducted by the NSABP. He earned his bachelor's and doctoral degrees from Texas Tech University in Lubbock, Texas and completed his internal medicine residency and medical oncology fellowship at Baylor College of Medicine Affiliated Hospitals in Houston, Texas.



**Jung-Min Lee, MD**

Investigator, Lasker Clinical Research Scholar  
Women's Malignancies Branch  
Center for Cancer Research  
National Cancer Institute  
Bethesda, MD

Jung-Min Lee, MD received her medical degree from Wonju College of Medicine, Yonsei University in South Korea. She completed her residency in internal medicine at Beth Israel Medical Center and her fellowship in medical oncology and hematology at the National Cancer Institute (NCI) /National Heart, Lung, and Blood Institute (NHLBI). In 2011, Dr. Lee joined the Medical Oncology Branch of NCI as an assistant clinical investigator. Her research involves developing and designing clinical trials to test novel agents targeting of DNA repair and related pathways and drug resistance in women's cancers. Dr. Lee was awarded Lasker Clinical Research Scholarship in 2016 and maintains her research focus in the development of innovative clinical trials for ovarian cancer. Dr. Lee's work has been recognized with multiple awards including the first Jane C. Wright M.D. Young Investigator Award from the American Society of Clinical Oncology, the New York Ovarian Cancer Research Award from the Foundation for Women's Cancers, and NCI Director's Award from the NCI. She is a study chair of ongoing phase 3 NRG-GY005 study of comparing olaparib and cediranib with cediranib alone or standard chemotherapy in platinum-resistant recurrent ovarian cancer. Dr. Lee is also active in conducting clinical and laboratory research directed towards developing a better understanding of the biology of recurrent ovarian cancer and translating discoveries from the laboratory into the clinic.



**Jennifer Keating Litton, MD**

Professor, Department of Breast Medical Oncology  
Clinical Cancer Genetics  
The University of Texas MD Anderson Cancer Center.  
Houston, TX

Jennifer Keating Litton, MD is Professor in the Department of Breast Medical Oncology and Clinical Cancer Genetics at The University of Texas MD Anderson Cancer Center. She holds an additional faculty position in the Graduate School of Biomedical Sciences at The University of Texas Health Sciences Center in Houston. She attended Duke University, with degrees in English and in History and The University of Massachusetts Medical School. After completing an Internal Medicine Residency at Baylor College of Medicine, she then served as the Chief Medical Resident. She completed a fellowship in Medical Oncology at The University of Texas MD Anderson Cancer Center before joining the faculty in the Department of Breast Medical Oncology where she is Chief, Section of Clinical Research and Drug Development. Her research interests include the treatment of young breast cancer patients, including the treatment of breast cancer during pregnancy, treatment-related infertility, hereditary cancer syndromes, immunotherapy and triple negative breast cancer. She is the principle investigator for multiple clinical trials. She serves as a member of the National Cancer Center Network National Guidelines Panel for Hereditary Breast and Ovarian Cancer Syndromes as well as an Editor for the NIH Physician Data Query (PDQ) and has been appointed to the Breast Immuno-Oncology Task Force of the National Cancer Institute Breast Cancer Steering Committee. She has authored multiple abstracts, peer-reviewed journal articles, and book chapters. Dr. Litton has served on the boards of the St. Luke's Episcopal Health Charities, the Children's Fund, Suites of Hope and is an alumni of the Texas Lyceum. She lives in Houston with her husband Todd and their three children.





**Ursula A. Matulonis, MD**

Chief, Division of Gynecologic Oncology  
Brock-Wilson Family Chair, Dana-Farber Cancer Institute  
Professor of Medicine, Harvard Medical School  
Boston, MA

Ursula A. Matulonis, MD, is Chief of the Division of Gynecologic Oncology at the Dana-Farber Cancer Institute and Professor of Medicine at Harvard Medical School. She is the first recipient of the Brock-Wilson Family Chair at the Dana-Farber Cancer Institute. She also co-leads the Ovarian Cancer Program within the Dana-Farber/Harvard Cancer Center. Her research focuses on developing new targeted therapies for gynecologic malignancies, with a specific interest in ovarian cancer and endometrial cancer.

Dr. Matulonis has led several PARP inhibitor, anti-angiogenic agent, immunotherapy, and combination trials for ovarian cancer in the United States and internationally. Dr. Matulonis serves on the Massachusetts Ovarian Cancer Task Force, the NRG ovarian committee, and the Scientific Advisory Board for the Ovarian Cancer Research Alliance, the Clarity Foundation, and Overcome. She received the Dana-Farber Dennis Thompson Compassionate Care Scholar award, the Lee M. Nadler "Extra Mile" Award, the Clarity Foundation award, and the Zakim Award at Dana-Farber for patient advocacy.

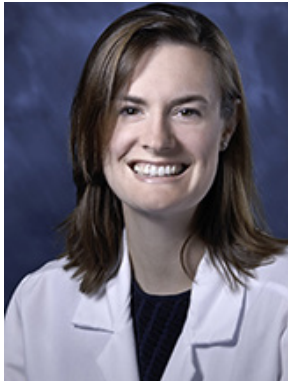
After receiving her MD from Albany Medical College, she completed an internship and residency at the University of Pittsburgh, followed by a medical oncology fellowship at the Dana-Farber Cancer Institute in Boston, MA.



**Kathleen Moore, MD, MS**

Jim and Christy Everest Endowed Chair in Cancer Research  
Associate Director Clinical Research  
Director, Oklahoma TSET Phase I Program, Stephenson Cancer Center  
Associate Professor, Section of Gynecologic Oncology  
Director Gynecologic Oncology Fellowship, Department of Obstetrics and Gyn  
University of Oklahoma Health Sciences Center  
Oklahoma City, OK

Kathleen Moore, MD, MS is the Virginia Kerley Cade Endowed Chair in Cancer Development and Associate Professor of Gynecologic Oncology in the Department of Obstetrics and Gynecology at the University of Oklahoma Health Sciences Center. She currently serves as the Associate Director of Clinical Research and the Director of the Oklahoma TSET Phase I Program at the Stephenson Cancer Center. She also serves as the Program Director of the Gyn Oncology Fellowship Program in the Section of Gyn Oncology of the Department of OB/GYN. She completed her gyn oncology fellowship at the University of Oklahoma Health Sciences Center in 2007 and was recruited to join the faculty. Her primary areas of interest are in new drug development and Phase I clinical trials.



**Bobbie J. Rimel, MD**

Assistant Professor, Division of Gynecologic Oncology  
Department of Obstetrics and Gynecology, Cedars-Sinai Medical Center  
Health Sciences Assistant Clinical Professor  
Department of Obstetrics and Gynecology  
UCLA School of Medicine  
Los Angeles, CA

Bobbie J. Rimel, MD graduated from Duke University Medical School in 2003. She completed her residency in Obstetrics and Gynecology at Northwestern in 2007 and her fellowship in Gynecologic Oncology at Washington University St. Louis in 2011. She is currently an Assistant professor and practicing gynecologic oncologist at Cedars-Sinai Medical Center. She is a co-PI of GY012. Her research focuses in novel therapeutics for endometrial and ovarian cancers and digital transactions that improve clinical trial accrual.



**Ritu Salani, MD, MBA**

Professor, Division of Gynecologic Oncology  
Department of Obstetrics & Gynecology  
The Ohio State University Comprehensive Cancer Center Arthur G. James Cancer  
Hospital and Richard J. Solove Research Institute  
Columbus, OH

Ritu Salani, MD, MBA, is a Professor of Gynecologic Oncology at the Ohio State University in Columbus Ohio, where she has been faculty since 2008. She attended medical school at the Northeastern Ohio Universities College of Medicine, followed by residency at Emory University and fellowship at Johns Hopkins University. She currently serves as the fellowship director at the Ohio State University and has been recognized with multiple teaching awards. She is an active member of the International Gynecologic Cancer Society, where she serves as the Chair of the Education Committee, as well as the Society of Gynecologic Oncology. She is a longstanding member of the Cervix committee within the NRG Oncology Group and serves as the Co-Chair for the Cervix Clinical Trials Planning Meeting with the National Cancer Institute. Her main research interests include novel therapeutics for cervical cancer.



**Oliver Sartor, MD**

C.E. & Bernadine Laborde Professor for Cancer Research  
Medical Director, Tulane Cancer Center  
Assistant Dean for Oncology  
Tulane Medical School  
New Orleans, LA

Oliver Sartor, MD is the C.E. and Bernadine Laborde Professor of Cancer Research and medical director of the Tulane Cancer Center. He also currently serves as the Assistant Dean for Oncology at Tulane University School of Medicine and is a Board member of the Louisiana Cancer Research Consortium, a legislatively established collaborative cancer research effort between LSU, Tulane, and Xavier Universities, as well as Ochsner Health System. Dr. Sartor's clinical and research interests have focused broadly on prostate cancer over the years. He is involved in a wide variety of clinical trials covering both translational issues and advanced treatments. In some of these trials, he serves in national leadership positions. He has published approximately 400 scientific articles and has given hundreds of invited lectures on advanced prostate cancer in 33 countries through the years. Dr. Sartor is medical oncology chair of the Genitourinary Cancer Committee of the NRG, a national clinical trials cooperative, and he serves as principal investigator on a number of NRG protocols. He has, since 2014, served on the National Cancer Institute's Board of Scientific Counselors for Clinical Sciences and Epidemiology, and he is a grant reviewer for both the Prostate Cancer Foundation and the Movember Foundation.



**Shannon N. Westin MD, MPH**

Associate Professor

Director, Early Drug Development

Dept. of Gynecologic Oncology and Reproductive Medicine

UT MD Anderson Cancer Center

Houston, TX

Shannon N. Westin, MD, MPH received her doctorate of Medicine from the University of Florida College of Medicine. She completed Obstetrics and Gynecology residency at the University of North Carolina – Chapel Hill and fellowship in Gynecologic Oncology at the University of Texas MD Anderson Cancer Center. During fellowship, she received an MPH with a concentration in epidemiology from the University of Texas, School of Public Health. In addition to her training in Gynecologic Oncology, she also completed a short fellowship in Investigational Cancer Therapeutics. She joined the faculty at The University of Texas MD Anderson Cancer Center in 2010. She has been honored as a K12 scholar as well as an Andrew Sabin Family Fellow.

Dr. Westin focuses on developmental therapeutics and the use of biomarkers to predict response and recurrence in gynecologic malignancies. She currently serves as the Director of Early Drug Development and Phase I trials in her department and is a Co-Director of the Ovarian Cancer Moonshot. Dr. Westin is a member of the NRG Oncology – GOG Developmental Therapeutics, Phase I, and Early Phase Protocol Oversight committees. She is the co-PI for major projects in her institution's SPORC in Uterine Cancer and SPORC in Ovarian Cancer. In addition, she is currently the PI or co-PI for greater than 20 novel treatment trials in gynecologic malignancies. Dr. Westin has authored or co-authored greater than 100 scientific publications, book chapters and invited articles. She has been invited to lecture as an expert on clinical trials, genomic testing and targeted therapy in gynecologic malignancies in national and international venues. She was selected for the competitive American Society of Clinical Oncology (ASCO) Leadership Development program and serves on four ASCO committees including the Communications Committee and Gynecologic Cancer Guidelines Group. She is an active member of the International Gynecologic Cancer Society and the Society of Gynecologic Oncology (SGO) and will serve on the Program Committee for the 2020 SGO Annual Meeting.



**Dmitriy Zamarin, MD, PhD**

Assistant Attending Physician and Translational Research Director

Gynecologic Medical Oncology Service

Memorial Sloan Kettering Cancer Center

New York, NY

Dmitriy Zamarin, MD PhD is an Assistant Attending Physician and Translational Research Director in the Gynecologic Medical Oncology Service at the Memorial Sloan Kettering Cancer Center. Dr. Zamarin obtained his MD and PhD degrees from the Mount Sinai School of Medicine in New York. He completed residency in Internal Medicine at the Mount Sinai Hospital in New York and fellowship in Hematology/Oncology at the Memorial Sloan Kettering Cancer Center, where he worked under the mentorship of Dr. James Allison and Dr. Jedd Wolchok, studying the mechanisms of response and resistance to immunomodulatory antibody therapy and virus-based therapeutics.

Dr. Zamarin is currently a principal investigator and a translational chair on several institutional and cooperative group clinical trials exploring novel immunotherapy combinations in gynecologic cancers. In the laboratory, his research is focused on characterization of patient samples from immunotherapy clinical trials with the goal of identifying the mechanisms predictive of response and resistance. His laboratory in addition uses mouse models to explore the mechanisms of tumor-immune system interactions and to develop novel therapeutics, with particular focus on oncolytic viruses and targeted therapies. For his work, Dr. Zamarin has received numerous awards, including Damon Runyon Foundation Fellowship Award, Ovarian Cancer Research Fund Liz Tilberis Early Career Award, and the Ovarian Cancer Academy Grant from the Department of Defense. On the institutional level, he is an active member on several committees, including Institutional Biosafety, Pharmacy and Therapeutics, and Clinical Protocol Development Committee.

***The GOG Foundation, Inc. would like to recognize and thank  
its commercial supporters for Independent  
Medical Educational Support  
associated with the  
2020 Winter Symposium***

**AbbVie  
AstraZenca  
Tesarro  
Clovis**

# Notes

# SYMPOSIUM

*IT'S A PARP WORLD AFTER ALL*

January 9, 2020

*Save the date for these upcoming symposiums!*

*July 16, 2020*

*Marriott Marquis  
Washington, DC*

*January 28, 2021*

*Hyatt Regency New Orleans  
New Orleans, LA*

*July 22, 2021*

*Philadelphia Marriott Downtown  
Philadelphia, PA*

*February 10, 2022*

*Phoenix Convention Center  
Phoenix, AZ*

*July 21, 2022*

*Hyatt Regency Chicago  
Chicago, IL*