



Cancer Trials Support Unit
A SERVICE OF THE NATIONAL CANCER INSTITUTE

Linking practice to progress

CTSUS Updates for NRG

July 16, 2020

Megan Blackburn
CTSUS Awareness, Education & Training (AET) Task Lead



1


Agenda

1. COVID-19 Information
2. Source Document Portal (SDP) / CTEP-AERS Integration
3. OPEN Updates
4. Provider Association and the Roster Update Management System (RUMS)
5. ePRO
6. Finding Help

Cancer Trials Support Unit

www.ctsu.org | 2


2



Cancer Trials Support Unit
A SERVICE OF THE NATIONAL CANCER INSTITUTE

Linking practice to progress

COVID-19 Information



3

COVID-19 Information Page

- › Contains all information received by the CTSU in one place
- › Announcements organized by:
 - NCI & other government entities (only appears on the COVID-19 page)
 - Networks (e.g., NCTN)
 - Lead Protocol Organization (LPO)
 - General announcements
 - Protocol-specific announcements
- › Documents are posted in the order they are received
- › Network announcements are also posted to other locations on the website
 - E.g., protocol-specific announcements are posted to protocol updates and protocol-specific webpages

Cancer Trials Support Unit

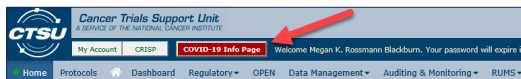
www.ctsu.org

4

4

Location

- › Accessed from the COVID-19 Info Page button located on the CTSU banner/header



- › NCI/CTEP hosts a CTEP Coronavirus Guidance Page;
The link is available from the Important Notice on the CTSU website

IMPORTANT NOTICE
COVID-19 Information
 Announcements from NCI and the LPOs will be posted as they are received. Use the COVID-19 button located at the top of the CTSU members' website to access the COVID-19 Information page. (login to members' website required). Additional information from NCI is available on the CTEP Coronavirus Guidance page. (password)

Cancer Trials Support Unit

www.ctsu.org

5

5

CTSU COVID-19 Information Page

COVID-19 Information Page
 As the CTSU receives information related to the COVID-19 pandemic, it will be posted to this page. This information will also appear in LPO Updates, Protocol Updates, and/or the protocol-specific webpages, as appropriate.
 This page is organized by the organization that sent the communication, and the most recent announcements appear first.

[Instructions for Reporting COVID-19 Related Protocol Announcements](#)

NCI and Other Government Entities

The notices listed in this section are posted to the [CTSU Coronavirus Guidance page](#). Please check the CTEP Coronavirus Guidance page for additional information.

1. [Interim Guidance for Patients on Clinical Trials Sponsored by the NCI Cancer Therapy Evaluation Program, Alignment of Oral DRO Agents to Clinical Trial Subjects \(June 2, 2020\)](#)
2. [Guidance for Collection of Adverse Events Related to COVID-19 Infection \(March 23, 2020\)](#)
3. [Interim Guidance for Clinical Trial Activities Affected by the Novel Coronavirus \(March 23, 2020\)](#)
4. [FDA Guidance on Conduct of Clinical Trials of Medical Products During the COVID-19 Pandemic](#)
5. [Guidance for 300 Limited Clinical Trials and Device Subjects Studies Affected by COVID-19 \(Notice Number: 302-DS-20-07\)](#)
6. [Guidelines Available to Ambulatory and Outpatients of Federal Financial Assistance Affected by COVID-19 \(Notice Number: 302-DS-20-08\)](#)
7. [Interim Guidance for Patients on Clinical Trials Sponsored by the NCI Cancer Therapy Evaluation Program and the NCI Community Oncology Research Program \(NCORP\) \(March 23, 2020\)](#)

NCTN/NCORP

Alliance

General Announcements

Cancer Trials Support Unit

www.ctsu.org

6

6

Reporting COVID-Related Protocol Deviations

- › New posting lists instructions on reporting COVID-19-related protocol deviations
- › Grid organized by LPO
- › Located on COVID-19 Info page and Resources > CTSU Operations Information > Education & Reference

Instructions for Reporting COVID-19 Related Protocol Deviations			
LPO	Instructions for Reporting COVID-19 Related Protocol Deviations	Raw Form/Folder	Method
ABCT	Sites should record deviations using the paper deviation log which is located under the COVID policy on the ABCT website (Document Area - General Information > COVID-19 Documents). Once available, instructions will be provided for sites to upload the log into Kave each month.	NA	Paper Deviation Log: site to upload monthly to Kave once forms are available
Alliance	The Alliance has implemented a single Raw Data Collection of all COVID-19 pandemic-related data for patients on Alliance clinical trials.	Two Raw forms in the Master Study (ALLIANCE-COVID-19 Clinical Trials)	Raw Master Study (ALLIANCE-COVID-19-Reporting)

NCI COVID Protocols

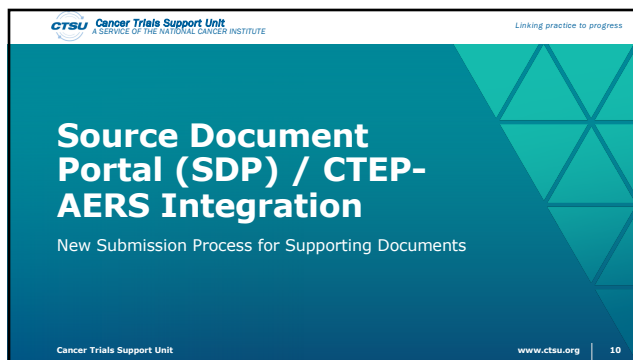
- NCI is sponsoring two COVID-related protocols
 - NCICOVID: *NCI COVID-19 in Cancer Patients Study (NCCAPS): A Longitudinal Natural History Study*
 - TRC-10446: *Tocilizumab in Hospitalized Cancer Patients with Coronavirus 2019 (SARS-CoV-2) and Severe Complications of Coronavirus Disease 19 (COVID-19)*
- Located in the new NCI folder in the protocol tree
- New NCI node in Accrual Reports

The screenshot shows the 'Active Protocols' list. The 'NCITC' entry is highlighted with a red box, and a red arrow points from the 'Protocols' tab to it. Below it, the 'NCIC' entry is also highlighted with a red box. The 'Reports' section is also visible, with 'NCIN', 'NCIC', and 'NCIC' highlighted in red boxes.

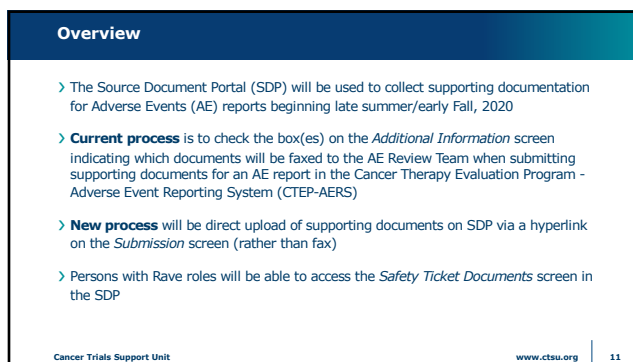
NCICoVID Trial Webinar

- › Webinars were conducted in May/June on NCICoVID
- › Recording, slides, and Q&A are in NCICoVID protocol-specific page >Documents > Education & Promotion

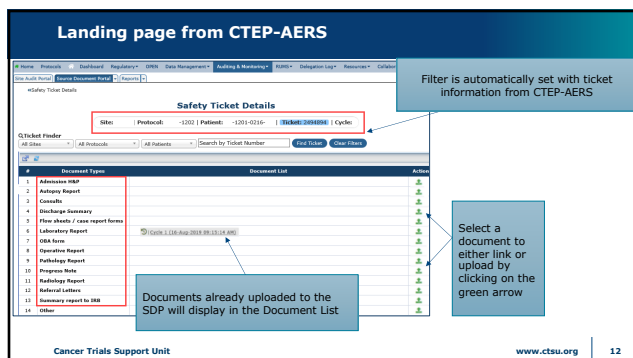
#	Document Title	Document Date
Education and Promotion Materials		
1	Study Calendar	01-May-2020
2	Schedule	01-May-2020
3	CLASSI, Specimen Tracking Training Guide	
4	Specimen Tracking, User Guide v2.0	
5	Specimen Tracking, ETCCH and CTRR Training	
6	Specimen Kit Management User Guide	27-May-2020
7	NCICAPS Communication Resources for Study Sites - Word version	19-Jun-2020
8	NCICAPS Communication Resources for Study Sites - PDF version	19-Jun-2020
9	HCL Social Media Resources	19-Jun-2020
10	NCICAPS Study Visit	19-Jun-2020
11	NCICAPS Overview - Slide - June 2, 2020	02-Jun-2020
12	NCICAPS Overview - Recording - June 2, 2020	02-Jun-2020
13	NCICAPS Overview - Recording - June 3, 2020	03-Jun-2020



10



11



12

Best Practices

- › Skip the SDP link/upload step if the AE report does not require any supporting documentation
- › Site staff responsible for reporting in CTEP-AERS will also be responsible for uploading supporting documents in the SDP
- › All communication between site staff and AE reviewers will continue to be via email

Cancer Trials Support Unit

www.ctsu.org

13

13

Upload vs. Document Linking

- › If a document is required to support the information on an AE report, first check if the document already exists in the SDP
 - If the required document appears on the *Safety Ticket Documents* screen, link the document to the ticket rather than uploading a duplicate document
- › The current fax-based process for sending supporting documents to the AE review team will remain in place for non-RSS managed protocols

Cancer Trials Support Unit

www.ctsu.org

14

14

Multiple Supporting Documents

- › There is flexibility with document uploads
 - More than one version of a document type (e.g., two laboratory reports for the same cycle as the ticket)
 - Documents from a cycle other than the cycle on which the AE occurred (e.g., a laboratory report for a different cycle than the ticket)

Cancer Trials Support Unit

www.ctsu.org

15

15

CTSU Cancer Trials Support Unit
A SERVICE OF THE NATIONAL CANCER INSTITUTE

Linking practice to progress

OPEN Updates

New Features

Cancer Trials Support Unit

www.ctsu.org16

16

OPEN Updates

> Sites in a follow-up status can now view historical data in OPEN and enter funding data for their enrollments

> Updates to the funding screens and funding reports

- Ability to search funding between specific date ranges in the funding report (see right)
- Increased number of records that can be exported to excel for the funding report
- New column for collect type (mandatory, mandatory request, conditional, optional) in the OPEN funding screen

Funding Report for:

To sort the results by Completion Date, click the header of "Completion Date" column.

To show results for a particular site, enter the NCI Site Code in the Site column, and click the Search button.

The Excel Export feature for the Funding Report will display a maximum of 5,000 records for all sites that the user has roster affiliation with.

Search Funding From: To:

14 4 12.3 9 34 25 7 Search Close

Site	Principal	Credit Network Group	Network/Study	Enrolled By	Enrollment Date	Funding Type	Funding #	Funding
144	144	144	144	144	144	144	144	144

Cancer Trials Support Unit

www.ctsu.org17

17

CTSU Cancer Trials Support Unit
A SERVICE OF THE NATIONAL CANCER INSTITUTE

Linking practice to progress

Provider Association and The Roster Update Management System (RUMS)

New Features & Reminders

Cancer Trials Support Unit


www.ctsu.org18

18

6

Provider Person Roster

- For TRFs entered by PMB staff from radiopharmacy licensure and supporting documents
 - Viewable on the DTL for TRF Providers associated with the enrolling site
- For Radiation/Imaging Providers managed in RUMS
 - Have access to TRIAD for studies using the full IROC integration or for credentialing purposes
 - Note – you will need to maintain the TRIAD Site User role on the enrolling site for legacy studies*

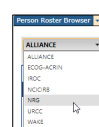



Cancer Trials Support Unit
 www.ctsu.org
 22

22


RUMS Reminders

- If on multiple rosters, select the correct one
- Use the ⓘ button for detailed person info, including registration (RCR) documents and required trainings
- Use the CTEP ID search feature to look up CTEP IDs
- Person roles can be added in bulk across rosters and sites
- Persons with the RUMS Update Person role for CIRB may request the addition of CIRB affiliates and components from RUMS
- Remember to check the status of person requests under the Tracking section

Cancer Trials Support Unit
 www.ctsu.org
 23

23


Cancer Trials Support Unit
A SERVICE OF THE NATIONAL CANCER INSTITUTE

Linking practice to progress

electronic Patient Reported Outcomes (ePRO)

Helpful Information: Access, Education & Training, Hints, and Support

Cancer Trials Support Unit
 www.ctsu.org
 24

24

ePRO Access for Rave Protocols

› Staff requirements:

- Rave CRA role
- On a participating site roster in RSS

› After completion of required trainings, may:

- Enter study data in Rave
 - eLearning needed: *EDC Essentials for Clinical Research Coordinators*
 - Link: *Rave EDC*
- Register patients in ePRO
 - eLearning needed: *Registering Your Subject in an ePRO Study*
 - Link: *Patient Cloud Registration*

Cancer Trials Support Unit

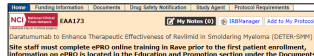
www.ctsu.org

25

25

ePRO Training

- › Statement displays in protocol-specific home page on the study title banner indicating ePRO online training required



› Accessed in iMedidata

- If required for a study, *eLearning* link appears in place of the *Rave EDC* link
- Once certified, the *eLearning* link will be replaced by the *Rave EDC* link
- › Only taken by a site user one time for one protocol and certification satisfies the requirement for all subsequent ePRO studies in Rave for that person
- › All staff with the Rave CRA role for a Rave study that is using ePRO must take the ePRO eLearning, regardless of whether they will be enrolling patients in ePRO

Cancer Trials Support Unit

www.ctsu.org

26

26

ePRO Patients and the App

› Patient registration in ePRO

- Patient must be enrolled in OPEN
- Site staff performing registration must have Rave CRA role; If a DTL is required, must be an approved Rave CRA on the DTL

› Patient access to ePRO

- ePRO forms can only be accessed using a patient's own approved device (or site device if available for a study)
- There is no access via a web browser

› ePRO app versions



Patient Cloud ePRO for older studies
(A221602, NRG-GU005, NRG-GU006, EAA173, 10021, 10107)



Patient Cloud is used for all remaining studies

Cancer Trials Support Unit

www.ctsu.org

27

27

ePRO Helpful Hints

- › Identify if a Rave study is using ePRO by checking the *Supported By* matrix on the CTSU website protocol-specific home page
- › For ePRO issues/support contact the study data manager (will forward issues as appropriate)
- › ePRO educational materials are in Documents > Education and Promotion for protocols using ePRO

Supported By:	CTRB	DTL	OPEN	Rave	INDV	INDC/INDG	DQP	ePRO	SAE	CH
	✓	✓	✓	✓	✓	✓	✓	✓	✓	✓

Cancer Trials Support Unit www.ctsu.org 28

28

CTSU Cancer Trials Support Unit
A SERVICE OF THE NATIONAL CANCER INSTITUTE

Linking practice to progress

Finding Help

Help Topics

Cancer Trials Support Unit www.ctsu.org 29

29

Help Topics Button


- › **Help Topics** are replacing User Guides
- › Content is unique to the page being viewed
- › Navigate using drop-downs or click on button to access whole page
- › Current availability
 - Members' home page
 - Dashboard
 - Regulatory
 - SDP, RUMS, DTL
 - DQP (Coming Soon!)

Regulatory
Help Topics

RUMS
Help Topics

Cancer Trials Support Unit www.ctsu.org 30

30

**Cancer Trials Support Unit**
A SERVICE OF THE NATIONAL CANCER INSTITUTE

Linking practice to progress

Thank You

Any questions?

Please contact the CTSU Help Desk if you have questions after the session at:

- Email: ctscontact@westat.com
- Phone: 1-888-823-5923

Photos are for illustrative purposes only. All persons depicted, unless otherwise stated, are models.

Cancer Trials Support Unit

www.ctsu.org 31
