

NRG
ONCOLOGY

Advancing Research. Improving Lives.™

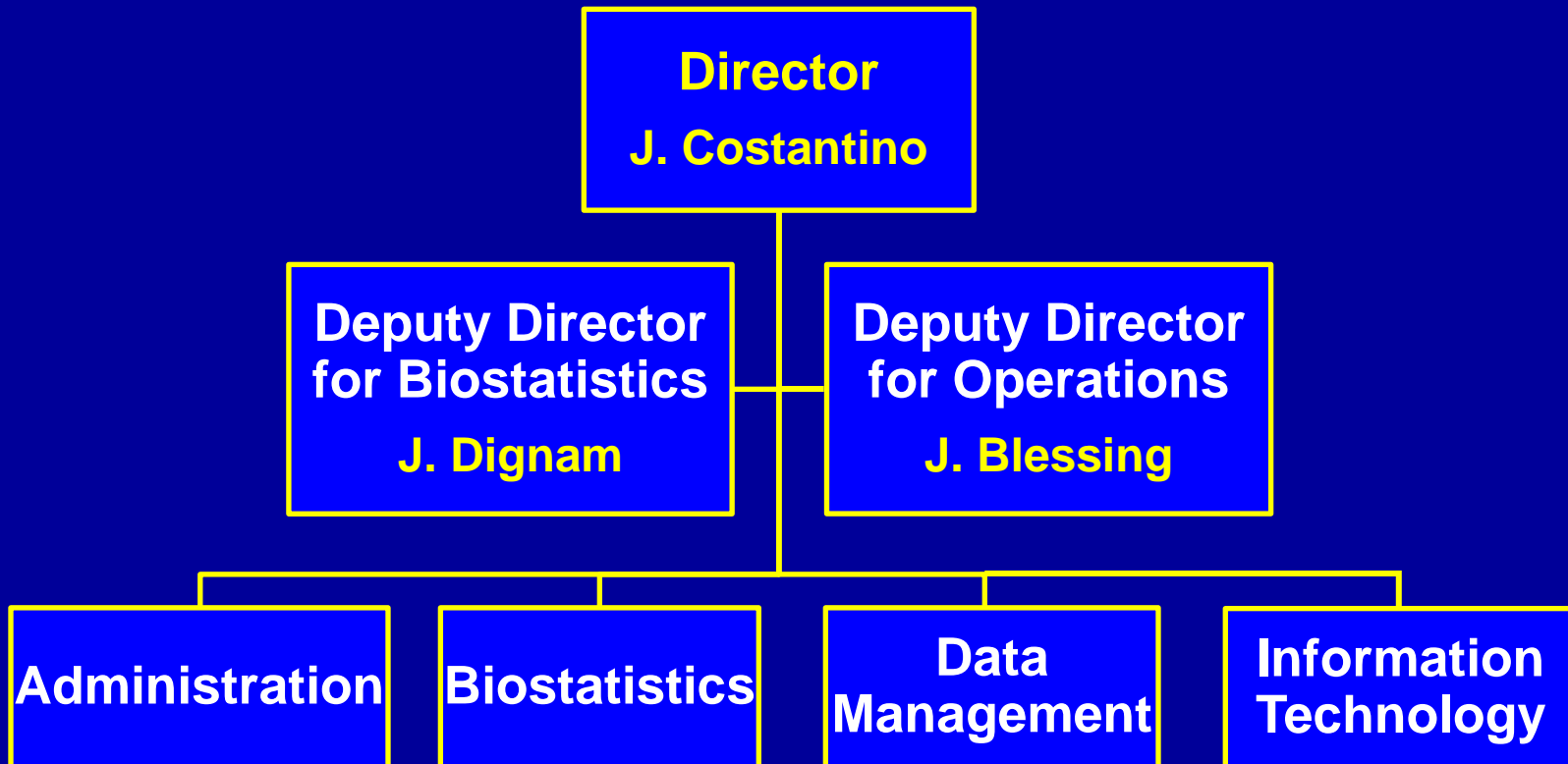
NRG Oncology Statistics and Data Management Center (SDMC)

Presentation Outline

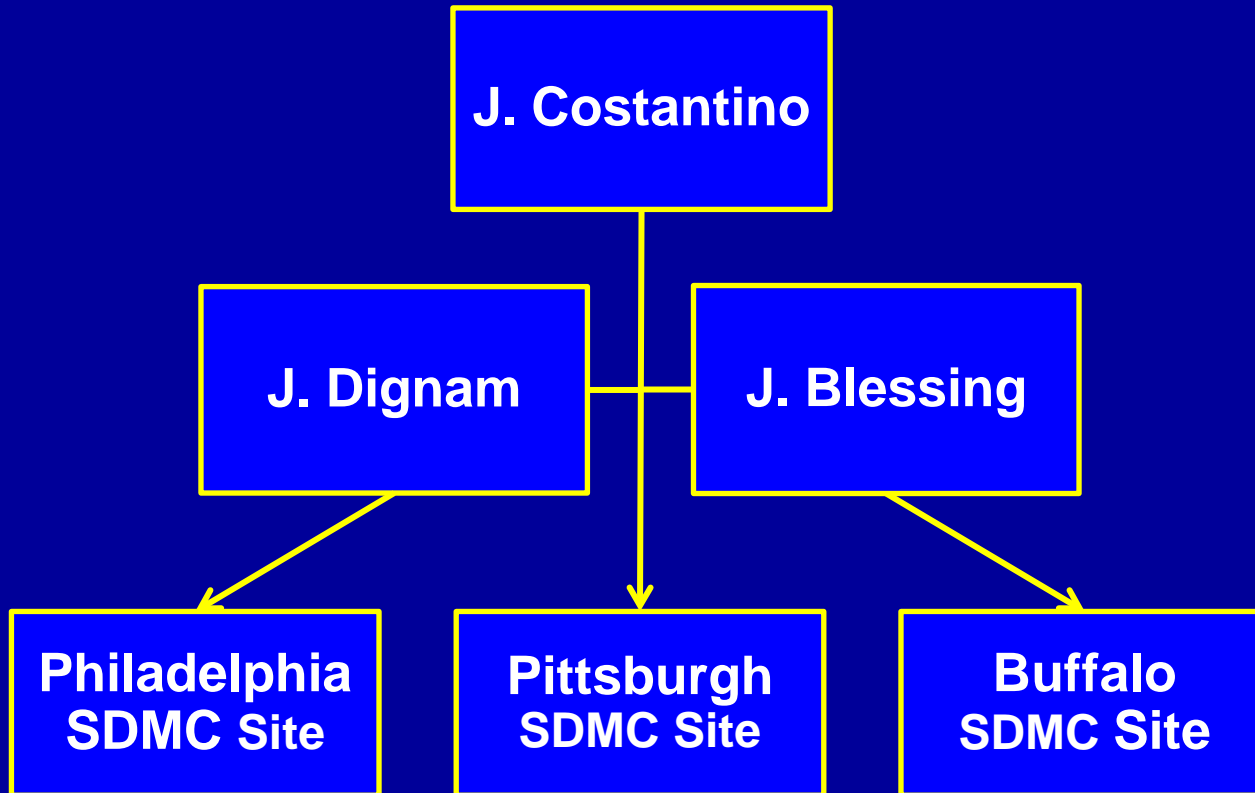
- **In this talk I will:**
 - **describe the structure and management of NRG Oncology SDMC;**
 - **explain the current roles of the three SDMC offices;**
 - **identify our plans going forward;**
 - **provide answers to some specific questions you may have.**

**Structure and Management
of the
NRG Oncology SDMC**

SDMC Administrative Structure



Day-to-Day Administrative Oversight of the Three SDMC Offices



Roles of the Three SDMC Offices

Roles of the DMC Offices

- Each office maintains the responsibility for data management and all other day-to-day responsibilities for work on their legacy trials.
- Data management and statistical support for new NRG trials will be distributed based on consideration of disease site and workload.
- Administration of some functions have been centralized at one office.

Centralized Functions

- **IT and DMC activities are centrally directed from Pittsburgh.**
- **Biostatistics activities are centrally directed from Philadelphia.**
- **Auditing activities are centrally directed from Buffalo.**
- **While centrally directed by an administrator at one office, personnel from all offices are utilized to accomplish the work.**

Plans Going Forward

Plans Going Forward

- **In the short term**
 - **The roles will continue as described above.**
- **In the longer-term**
 - **These roles will continue as described except for that of data management.**
 - **Within the next 2 to 3 years, data management activities will be reduced to no more than two sites.**

Other Questions You May Have

Will all data be entered via Rave?

- **Yes, eventually.**
 - **All data for new NRG Oncology trials will be entered via Rave.**
 - **As legacy trials are completed, the volume of data entered through the three legacy systems will be reduced and eventually eliminated.**

Will new members automatically get access to all of the legacy data systems?

- **No, you must gain access to each system.**
 - **GOG legacy system** - once a site submits an IRB approval to CTSU, the staff in RSS are initiated in the system with their CTEP IAM password as their system password.
 - **RTOG legacy system** – application for system access is under “About Us” on the RTOG website.
 - **NSABP legacy system** – once a patient is entered in a legacy trial, then contact support@nrgoncology.org for access.

Will there eventually be one password for NRG?

- Yes, very soon.
 - Your CTEP IAM password, which is your Rave password, will automatically be your NRG Oncology website password.

Will there be a NRG contact list for the biostatistics centers?

- We are currently working on this.
- In the mean time,
 - Legacy office contact lists are posted on the SDMC section of the NRG website (<http://www.nrgoncology.org>);
- Also, for questions on who to contact or questions of any type, we encourage you to use support@nrgoncology.org

In Closing

- **We have only been merged since March 1st.**
- **A lot has been accomplished to harmonize activities across the SDMC offices and to develop NRG-wide systems in support of the our research endeavors.**
- **There is still a lot to do.**
- **We are working with haste to achieve as much as we can, as soon as we can.**

NRG
ONCOLOGY

Advancing Research. Improving Lives.™

NRG Oncology Statistics and Data Management Center (SDMC)

Questions?